

Thermalwall® Insulated Rainscreen Panels are designed to provide high performance building enclosures while accelerating construction schedules and minimizing costs.



Thermalwall®: Insulated Prefab Rainscreen Panel System

Thermalwall® Insulated Rainscreen Panels offer optimized design in energy efficiency and durability, providing a complete thermal, air, water, and fire solution in an innovative prefabricated system. Manufactured in a state-of-the-art facility providing excellence in craftsmanship and materials. Thermalwall® is designed to accelerate construction schedules while minimizing costs.



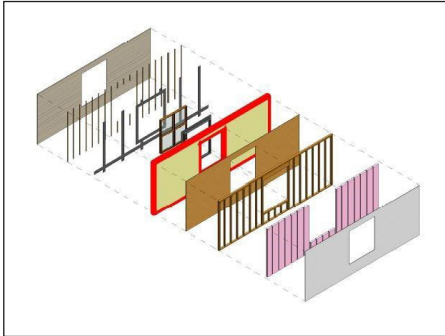
FEATURES AND BENEFITS

- Factory quality is systematically and strictly monitored, under favorable interior conditions, by experienced tradesman.
- Energy efficient 25psi closed cell polyisocyanurate foam core bonded to 12mil glass fiber reinforced aluminum facers.
- Integrated furred rainscreen assembly for optimized water/vapor control
- CFC-, HCFC- and HFC- free blowing agent that has zero Ozone Depletion Potential (ODP) and negligible Global Warming Potential (GWP)
- Reduced labor costs and accelerated project completion
- “Best in Class” Principals of Building Science
- LEED Credit Contribution
- Optimized Enclosure for Net Zero Ready Homes(NZERH)
- Improved Indoor Air Quality (IAQ)
- Prescriptive Envelope Compliance - Energy Star V3.1
- Exceeds 2015 IECC Envelope Requirements
- Multiple Exterior Cladding Options



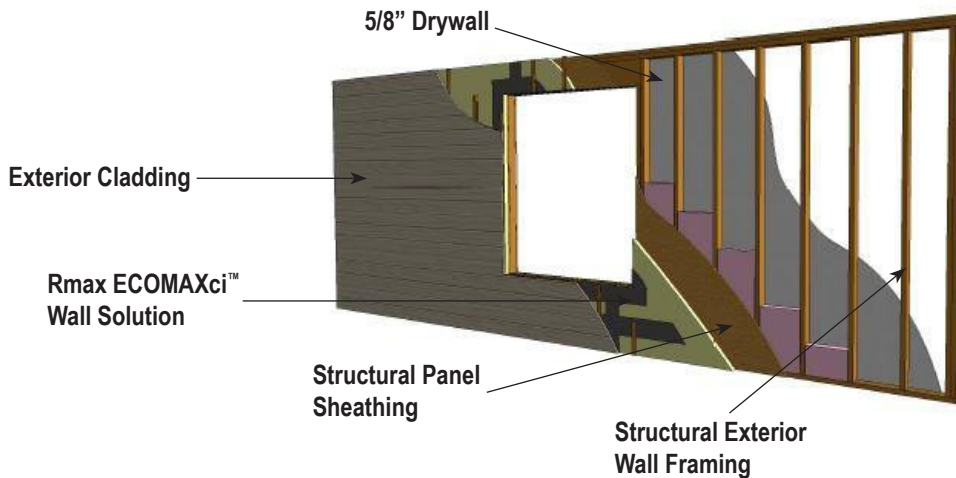
Delivering Superior Performance

Thermalwall® Rainscreen Panels utilize Rmax ECOMAXci™ Wall Solution, which provides continuous insulation for optimal energy-efficiency and maximized performance.



Thermalwall® Rainscreen Panels:

- Available up to R-31 (4.5" thick ECOMAXci™)
- Manufactured in a controlled environment ensuring quality and accuracy
- Installed on-site by trained and certified industry professionals
- Fabricated in lengths up to 40' to increase productivity and minimize the number of joints in exterior walls
- Combines the process of wall framing, rainscreen and air/vapor barrier assemblies to reduce on-site construction time



COMPLIANCES AND TESTING

Continuous Insulation Code References

- International Building Code (IBC)
- International Energy Conservation Code (IECC)
- International Green Construction Code (IGCC)
- ASHRAE 90.1
- ASHRAE 189

Air Barrier

- ASTM E2357
- CAN/ULC-S742 (A1)

Fire Performance

- ASTM E84 Class A
- NFPA 285
- 1, 2, 3 or 4 hour Fire Rated Assemblies as shown in the UL Fire Resistance Directory.
 - Design No.: U026, U326, U330, U354, U424, U460, U902, U904, U905, U906, U907, V454, V499

Water-Resistive Barrier

- AATCC Test Method 127
- ASTM E331

For inquiries, please contact Patrick Caldwell at 401-519-1409.